

Whitburn  
Church of England  
School



Spring 2010

OP  
P  
t  
i  
O  
N  
S



## HOW SHOULD YOU CHOOSE?

As pupils in Year 9, it is quite natural that you may be undecided about your future plans and many of you will, without doubt, change your minds over the next two years. You should therefore consider the following points:

- Keep your career options open by choosing **AS BROAD A RANGE OF SUBJECTS AS POSSIBLE**.
- Within the bounds of the option choices available, choose subjects that you **ENJOY** or in which you are **SUCCESSFUL** (preferably both).
- **LISTEN** to the advice of subject teachers, especially where new subjects are involved.
- If you do have definite career/job plans at this stage find out if there are certain subjects that would be helpful to you to study.
- Don't take or drop subjects for the wrong reasons, and don't pay too much attention to the 'advice' given by friends: **WHAT SUITS THEM MAY WELL NOT SUIT YOU**.
- If you have any doubts or need any help, **ASK A TEACHER**.

## THINGS TO THINK ABOUT WHEN CHOOSING YOUR OPTIONS

For a **BALANCED** range of subjects you should try to choose:-

**A HUMANITIES OPTION** – Geography, History or a Language

**A PRACTICAL OPTION** – Art, Music or GCSE PE

**AN ADDITIONAL OPTION** – such as Business Studies or Media Studies

If you follow this advice, this will give you a wide range of opportunities for future studies and career decisions.

If you wish to choose **SEPARATE SCIENCES** the decision to allocate a place will be based on your **February key assessment exam result**. You will also need to have a **good track record on completion of homework** and meeting deadlines. This is a demanding course and places are limited to two classes (50 pupils).

## **WHO CAN HELP YOU CHOOSE?**

Help is available in a variety of ways. We hope that the work you have already done in school, for example in PSHE lessons, will be helpful. In addition, several people are able and willing to help:

- Subject teachers, who know your strengths and weaknesses in their subjects.
- Your Form Tutor and Head of Learning, who have an overall picture of your progress.
- Careers link teacher Mr Peacock and Connexions adviser, Mr Anthony Moore, who can provide specialist information.
- Any teacher you regard as an 'adviser'; they may know you well enough to be sympathetic and to help you sort out any problems.
- Parents/carers and other relatives.

It's not easy to make decisions about your future – this is why help is available and important. Don't feel that you have to 'get on with it' by yourself – you don't!

## GCSE Courses

Most GCSE courses offered by all of the exam boards were restructured as from September 2009.

1. Most of the current GCSE specifications contain the option for a modular exam during the summer term of Year 10 as well as Year 11.
2. In almost all GCSE subjects **controlled assessment** has been introduced to replace coursework. Where subjects have controlled assessments, these are usually worth 25% of the total GCSE mark or maybe 60% of the total mark in the case of practical subjects.

### What is a Controlled Assessment?

For many subjects the controlled assessment task is similar to the old coursework task. The key difference is the new requirement for all of the work to be carried out under controlled conditions, which usually means in school under supervision. The stages in the process differ slightly between subjects but are usually as follows:

1. Pupils are issued with a set of task instructions provided by the exam board and some background information from their subject teacher.
2. Pupils carry out research which can still include fieldwork where applicable e.g. in Geography.
3. Pupils complete their final write-up individually under controlled (i.e. exam type) conditions with direct teacher supervision and within a specified time (usually 6 hours maximum when worth 25% of the total GCSE mark).

Full details of the new GCSE specifications can be found on the exam board websites. Most subjects follow AQA specifications except Dual Award ICT, Business Studies and Music (Edexcel).

[www.aqa.org.uk](http://www.aqa.org.uk)  
[www.edexcel.com](http://www.edexcel.com)

## YEAR 10 and 11 CURRICULUM

**Everyone will study these COMPULSORY subjects:**

English	Physical Education
ICT	Religious Education
Mathematics	Science
Personal, Social and Health Education	Technology

Within Technology you must choose from one of the areas of study indicated below:

- Electronic Products
- Food
- Graphics
- Textiles

**You can then choose to study THREE OPTION SUBJECTS, one from each option block:**

OPTION X	OPTION Y	OPTION Z
Art	Art	Art
Business Studies	Geography	ASDAN
French	History	Business Studies
Geography	Media Studies	French
History	Physical Education GCSE	Geography
Media Studies	Separate Sciences (Biology, Chemistry and Physics)	Media Studies
Separate Sciences (Biology, Chemistry and Physics)	Spanish	Music

## KEY STAGE 4 SUBJECTS

### ART - OPTIONS X, Y & Z



Pupils' work includes practical and critical studies; you will produce a minimum of 2 assignments. The assignments include preparatory work, sketchbooks, logs or journals of the areas listed below. The Art exam has 4 weeks of preparatory work followed by 10 hours to produce a final piece or pieces of work.

Art Media include:

- Drawing and/or Painting
- 3D work
- Print Making
- Mixed Media
- Digital Photography
- Creative Textiles

### Assessment

#### **Controlled assessment** (60% of final mark)

This is a portfolio and must include more than one project selected from work undertaken during the GCSE course.

#### **External Assessment** (40% of final mark)

Question papers are to be issued to pupils during the spring term in the year of the examination. There is unlimited preparation time and 10 hours of supervised time.

**CONTACT:**        *MRS STEVENSON*

## ASDAN YOUTH AWARD SCHEME - OPTION Z



**One selected group of pupils** will be able to follow an alternative curriculum. If selected, you will take part in the ASDAN Youth Award Scheme and follow a curriculum which is more focused on the world of work and the Key Skills required by employers. You will, however, still have access to at least nine GCSE grades.

### **What is the ASDAN Youth Award Scheme?**

The Award Scheme is an imaginative way of promoting and recording the qualities, abilities and achievements of young people as well as introducing new activities and challenges. It gives you the opportunity to try out different things and develop your skills.

### **An outline of the ASDAN Scheme**

On joining the scheme you will receive a record book for ASDAN Cope level 1 and 2 in which you will record all the necessary details that will eventually lead to success. The Cope Award contains a choice of challenges that will help you to become more skilled in various ways, such as;

- **Working with others**
- **Problem solving**
- **Research**
- **Oral Presentation**
- **Improving own learning**
- **Discussion**

You will be required to record evidence to prove that you have satisfactorily completed each challenge. Evidence comes in all forms and may include written work, photos, tickets or certificates. A residential trip, additional work experience and college placements are all essential parts of the ASDAN course.

### **How will the ASDAN Youth Award Scheme help me after leaving school?**

The awards are highly valued within Further and Higher Education, as well as being recognised by a wide range of employers. In fact the scheme was devised by teachers, employers and Higher Education tutors. The scheme provides you with the chance to display all of your personal qualities, rather than just academic achievements, to a potential employer.

**CONTACT:**        *MR PEACOCK*

## **BUSINESS STUDIES - OPTIONS X & Z**



The Business Studies GCSE course is covered in three units:

- Unit 1: Introduction to Small Business
- Unit 2: Investigating Small Business
- Unit 3: Building a Business

You will learn more about how small businesses are developed and discover how businesses promote themselves and keep their customers happy. You will learn how businesses manage both their finances and the people who work for them.

### **Assessment**

**Unit 1:** Written examination paper with multiple-choice and objective test questions based on the unit.

**Unit 2:** Controlled assessment task.

**Unit 3:** Written examination paper where questions will be a mixture of multiple-choice, data response, short-answer, extended-writing and scenario-based questions. For example, you may be given details of a business and asked a few questions based on that business.

**CONTACT:**        *MISS THIRLWELL*

## **DESIGN AND TECHNOLOGY - COMPULSORY**

Within this subject a number of different courses can be taken:

- Electronic Products
- Food Products
- Graphics Products
- Textiles



You will be assessed through a controlled assessment (60%) and a final examination (40%). You will be expected to provide ingredients for Food Technology and fabrics for Textiles Technology; the products from these will be your property, though financial assistance may be available.

**CONTACT:**        *MISS MACK*

## DUAL AWARD INFORMATION AND COMMUNICATION TECHNOLOGY - COMPULSORY



This course teaches you how to use a variety of ICT applications such as word processing, spreadsheets, databases, presentation and multimedia software.

A GCSE in ICT will give you the ability to analyse, understand and control the technology that surrounds you.

You will learn to understand file management and standard ways of working, including how to use ICT in a legal and secure way.

In Year 10 you will explore how digital technology impacts on the lives of individuals, organisations and society. You will learn about current and emerging technologies and the issues raised by their use. You will use a range of software and hardware tools to produce effective solutions to ICT problems. You will enter a GCSE module examination in January of Year 10.

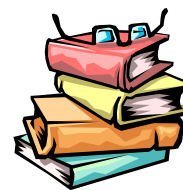
In Year 11 you will explore the design of interactive products such as websites, games and databases. You will learn how to produce and interpret design information. You will also use the knowledge, skills and understanding gained to produce an interactive product for others to use. You will take your final examination at the end of Year 11.

### Assessment

- (a) Examinations
- Unit 1 – Living in a Digital World 20%
  - Unit 3 – Exploring Digital Design 20%
- (b) Coursework:
- Unit 2 – Using Digital Tools 30%
  - Unit 4 – Creating Digital Products 30%

**CONTACT**      *MR SMAILES*

## ENGLISH – COMPULSORY

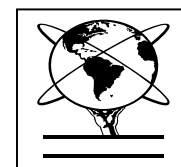


You will study an integrated course - AQA GCSE English/English Literature. This will generate two separate GCSE qualifications. The syllabus contains reading elements as well as written and oral coursework. All pupils who satisfy the controlled assessment requirements will be entered for both Language and Literature Examinations. The controlled assessment tasks account for 40% of the English Language GCSE and 25% of the English Literature GCSE.

There will be two written examination papers for Language and one for Literature.

**CONTACT:**        *MRS AL AJDIRI*

## FRENCH – OPTIONS X & Z



You will follow the **AQA New Specification GCSE in French**. This will build upon the grade achieved during the early entry GCSE taken in Year 9. You will take your GCSE French exam in Year 10, followed by a one year intensive course in Spanish, with a GCSE taken at the end of Year 11.

In the French GCSE course, you will study four contexts and purposes:

- **Lifestyle:** *Health, Relations and Choices*
- **Leisure:** *Free Time and the Media, Holidays*
- **Home and Environment:** *Home and the Local Area, Environment*
- **Work and Education:** *School/College and Future Plans, Current and Future Jobs*

The final examination tests four skill areas:

AO1: Understand spoken language (20%):

- Listening test set and marked by AQA

AO2: Communicate in speech (30%):

- Controlled Assessment (internally assessed and moderated by AQA; you submit two tasks for moderation)

AO3: Understand written language (20%)

- Reading test set and marked by AQA

AO4: Communicate in writing (30%)

- Controlled Assessment (externally assessed by AQA; you submit two tasks for marking)

**CONTACT:**        *MRS COE*

## **GEOGRAPHY - OPTIONS X, Y & Z**

This GCSE course is divided into three units:

**Unit 1: Physical Geography** – you will study topics such as Water in the Land, Restless Earth and The Coastal Zone

**Unit 2: Human Geography** – you will study topics such as Tourism, Population Change and The Development Gap.

**Unit 3: Local Fieldwork Investigation**



### **Assessment**

You will sit two examination papers (one each for Units 1 & 2) worth 75% of the total marks and the other 25% of the marks are gained from a Geographical Enquiry which constitutes the controlled assessment.

**CONTACT:**        *MISS R WILLIAMS*

## **HISTORY - OPTIONS X & Y**

### **Unit 1: International Relations 1900 - 1949**

Causes of the First World War

International relations between the wars

Causes of the Second World War

### **Unit 2: 20<sup>th</sup> Century Depth Studies**

The USA 1918-1929

The USA and the Vietnam War 1964 - 1975

### **Unit 3: British History Historical Enquiry**

Britain in the First and Second World Wars



### **Assessment**

**Unit 1:** Written exam worth 37.5% of the total marks.

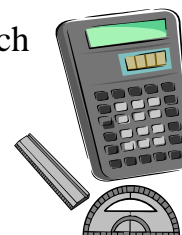
**Unit 2:** Written exam worth 37.5% of the total marks.

**Unit 3:** Controlled assessment: approximately 2000 words, comprising 25% of the final mark.

**CONTACT:**        *MR LIDDLE*

## MATHEMATICS - COMPULSORY

You will follow the **AQA GCSE Mathematics (Modular)** course which will lead to one GCSE grade. Assessment is by 3 written examination papers, the first 2 of which will be taken in Year 10.



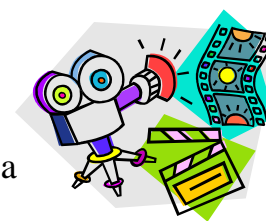
Unit 1	Statistics and Number
Unit 2	Number and Algebra
Unit 3	Geometry and Algebra

**CONTACT:**        *MRS LANES*

## MEDIA STUDIES - OPTIONS X, Y & Z

In this GCSE course you will learn to:

- Respond critically and analytically to a range of mass media texts
- Investigate the nature of media consumption by different audiences
- Enhance your skills in the planning and creation of media products
- Engage with the developing world of media technologies



There are two units:

**Unit 1:** Investigating the Media

**Unit 2:** Understanding the Media

### **Assessment**

Unit 1 is assessed through a written paper based on a pre-released topic with guidance and stimulus (50% of total mark). Unit 2 is a variety of controlled assessments set by the exam board and is worth 50% of the total mark.

You will also work in small groups and ‘in role’ to create media texts. You will develop a practical production in one area, and at least one of the topics of study must involve the moving image.

There are links with English especially in the study of media texts in the English Language exam, and there are also strong links with ICT and the involvement of modern technology in media production.

**CONTACT:**        *MR LLOYD*

## MUSIC - OPTION Z



You will learn how to improve your performing skills and through work in composing you will gain an insight into how music is constructed from initial ideas through to the finished product. Music Technology options will be included to develop sequencing and recording skills. You will also learn how to analyse music in a variety of styles.

There are 3 units:

### **Unit 1: Performing Music (30%)**

You will produce both a solo and an ensemble performance recorded at any time during the course. Performances may be on any instrument and in any style. Controlled assessment conditions will apply to this unit.

### **Unit 2: Composing Music (30%)**

You will produce: two compositions or two arrangements or one arrangement and one composition. The combined length of the two pieces will be between two and four minutes. Controlled assessment conditions will apply to this unit.

### **Unit 3: Music – Listening and Appraising (40%)**

This is an examination externally set and marked.

**CONTACT:**        *MR ROSE*

## PERSONAL, SOCIAL & HEALTH EDUCATION - COMPULSORY



This is not a GCSE course. You are taught by your Tutors and specialist speakers where appropriate. Elements in this course will include Health Education and Citizenship.

You will be encouraged to develop your confidence and accept responsibilities. You will also be encouraged to make the most of your abilities. You will be taught to develop good relationships and to respect the differences between people.

You will be taught how to develop a healthy, safer lifestyle.

Careers Education is an important part of this course and you will develop your own Independent Learning Plan (ILP). Preparation for Work Experience will take place and time will also be given so that you can negotiate GCSE and learning targets.

You will produce a Progress file which will provide evidence of your academic and non academic progress and will support you in your post-16 choices.

You will continue to receive Enterprise Education through PSHE, long registration activities and dedicated study programmes. This will be delivered by teaching staff and visitors from industry, business and outside agencies.

You will develop enterprising skills and attitudes to prepare them for work and later life. You will be empowered to take responsibility towards achieving your goals.



**CONTACT:**        *MRS LATIMER-MILLS*

## PHYSICAL EDUCATION - COMPULSORY

This is not a GCSE course. You will all be taught at least two out of the six areas of activity. You are encouraged to show that you participate in physical activity to support a fit and healthy lifestyle and are taught in both single sex and mixed groups. You are regularly assessed according to National Curriculum criteria.



**CONTACT:**        *MISS JACQUES*

## PHYSICAL EDUCATION GCSE - OPTION Y

The GCSE course is made up of 2 units.

### Unit 1: Knowledge and Understanding for the Active Participant

This is a written paper worth 40% of the total marks. Questions are multiple choice, short answer and extended answers based on pre-released information.



### Unit 2: The Active Participant

This is a controlled assessment worth 60% of the total marks. You will have to complete four assessments across a range of sports to show skills in different roles including player/performer, organiser, leader/coach, choreographer or official.



**CONTACT:**        *MISS JACQUES*

## RELIGIOUS EDUCATION - COMPULSORY

You will follow the **GCSE Full Course – Ethics, Philosophy and Religion in Society**. You study two out of the six units available. This GCSE course begins in Year 9 and lasts for three years. The GCSE course is designed to allow you to make a thematic study of religion and religious responses to fundamental questions of life with a particular focus on ethical and philosophical issues. Topics include:

Unit 2:        Religion and Animal Rights  
                Religion and Planet Earth  
                Religion and Prejudice  
                Religion and Early Life  
                Religion and Young People  
                Religion and War and Peace



Unit 4        The Existence of God  
                Revelation  
                Problem of Evil and Suffering  
                Immortality  
                Miracles  
                Science and Religion

There is one written paper for each unit, which each contributes 50% of the total marks.

**CONTACT:**        *MRS JOHNSTON*

## SCIENCE - COMPULSORY

Most of you will sit the **AQA Co-ordinated ‘Core’ Science and ‘Additional’ Science** – in order to gain **two GCSEs in Science**.

Topics covered will include areas of Biology, Chemistry and Physics – focussing on ‘How Science Works’. These will be assessed by external assessments in Year 10 and Year 11. These papers contribute 75% of the final marks, the other 25% being drawn from ‘Centre Assessed Units’ (externally set, but internally assessed), the best chosen for each GCSE.

You will gain **Two GCSE** grades.



## SEPARATE SCIENCES – OPTIONS X & Y

This course is aimed at those of you who intend to study at least one Science in Higher Education. You will be taught Science during option time to cover extension work in Biology, Chemistry and Physics – focussing on ‘How Science Works’.

Each subject is assessed by three externally set and marked exams, accounting for 75% and a ‘Centre Assessed Unit’ exam (externally set, but internally assessed), one for each GCSE for the other 25%.

You will gain **Three GCSE** grades.

***\*\*In the event of this course being oversubscribed, places will be awarded on the basis of the results from the February key assessment exam. Results will be placed in rank order to allocate places.\*\****

## AQA Coordinated SCIENCE – SINGLE AWARD (Core Science)

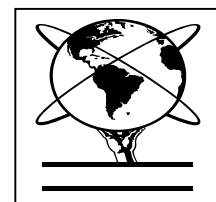
Those of you who opt for the ASDAN Award Scheme will sit the Science Single Award. Topics covered will include areas of Biology, Chemistry and Physics – focussing on ‘How Science Works’. These will be assessed in Year 10 and 11 by six objective tests, accounting for 75% of the final mark. The final 25% being drawn from one ‘Centre Assessed Unit’ exam (externally set, but internally assessed).

You will gain **One GCSE** grade.

**CONTACT:** *MR OREN for all of these courses.*

## SPANISH - OPTION Y

You will follow the **AQA New Specification GCSE in Spanish** which is designed to develop a lifetime means of communication with others. This will be an intensive course where you will complete a new language to GCSE level over two years.



In the Spanish GCSE course, you will study four contexts and purposes:

- **Lifestyle:** *Health, Relationships and Choices*
- **Leisure:** *Free Time and the Media, Holidays*
- **Home and Environment:** *Home and the Local Area, Environment*
- **Work and Education:** *School/College and Future Plans, Current and Future Jobs*

The final examination tests four skill areas:

AO1: Understand spoken language (20%):

- Listening test set and marked by AQA

AO2: Communicate in speech (30%):

- Controlled Assessment (internally assessed and moderated by AQA; you submit two tasks for moderation)

AO3: Understand written language (20%)

- Reading test set and marked by AQA

AO4: Communicate in writing (30%)

- Controlled Assessment (externally assessed by AQA; you submit two tasks for marking)

**CONTACT:**      *MRS COE*

## CHOOSING YOUR OPTIONS

Please complete the boxes on the yellow form at the end of this booklet.

It should be returned to your Form Tutor by **Tuesday 16<sup>th</sup> March**.

**If you fail to return your option form by the final deadline of noon on 16<sup>th</sup> March you will have the choices made for you.**

Please note that we **cannot guarantee** that everyone will follow their first choice of option subjects; we must consider pupil suitability, class sizes, staff numbers and the availability of specialist rooms.

### **To complete the Options Form:**

- First decide which of the Technology Options you wish to choose and put a number 1 by your first choice and a number 2 by your second choice. **N.B. You must make a first and a second choice**
- Then choose subjects from all three option blocks, writing a number 1 by your first choice and a number 2 by your second choice.

**YOU CAN ONLY PUT A NUMBER AGAINST A SUBJECT ONCE.**

**ALL SECOND CHOICES MUST BE DIFFERENT FROM ALL FIRST CHOICES.**

## SAMPLE OPTION FORM

*This is a sample form to show you how to complete the boxes.  
Notice that the second choices are also shown in these Option Blocks.*

**You can only put a number against a subject once.**

Name	Lucy Lantern	Form	9 WR
------	--------------	------	------

<b>TECHNOLOGY</b>	
Electronic Products	
Food Products	2
Graphics	
Textiles	1

<b>OPTION X</b>	<b>OPTION Y</b>
Art	1
Business Studies	
French	
Geography	2
History	
*Separate Sciences (Biology, Chemistry and Physics)	
Media Studies	
<b>OPTION Z</b>	
Art	
ASDAN	
Business Studies	1
French	
Geography	
Media Studies	2
Music	
	* N.B. in the event of this course being oversubscribed, places will be awarded on the basis of the results from the February key assessment exam
	Parent/Carer Signature .....

**OPTION FORM 2010 – DRAFT COPY (PLEASE KEEP THIS COPY)**

Use this form to draft your options  
Complete and hand in the **yellow** Options Form enclosed

<b>Name</b>		<b>Form</b>	
-------------	--	-------------	--

<b>TECHNOLOGY</b>	
Electronic Products	
Food Products	
Graphics	
Textiles	

<b>OPTION X</b>	<b>OPTION Y</b>
Art	Art
Business Studies	Geography
French	History
Geography	Media Studies
History	Physical Education GCSE
* Separate Sciences (Biology, Chemistry and Physics)	* Separate Sciences (Biology, Chemistry and Physics)
Media Studies	Spanish
<b>OPTION Z</b>	<p>* N.B. in the event of this course being oversubscribed, places will be awarded on the basis of the results from the February key assessment exam</p>
Art	
ASDAN	
Business Studies	
French	
Geography	
Media Studies	
Music	Parent/Carer Signature .....

<b>OPTION FORM 2010</b>			
<b>Name</b>		<b>Form</b>	

<b>TECHNOLOGY</b>	
Electronic Products	
Food Products	
Graphics	
Textiles	

Deadline for return of form is  
**Tuesday 16<sup>th</sup> March**

Forms should be returned to  
**Form Tutor**

<b>OPTION X</b>	
Art	
Business Studies	
French	
Geography	
History	
* Separate Sciences (Biology, Chemistry and Physics)	
Media Studies	

<b>OPTION Y</b>	
Art	
Geography	
History	
Media Studies	
Physical Education GCSE	
* Separate Sciences (Biology, Chemistry and Physics)	
Spanish	

<b>OPTION Z</b>	
Art	
ASDAN	
Business Studies	
French	
Geography	
Media Studies	
Music	

\* N.B. in the event of this course being oversubscribed, places will be awarded on the basis of the results from the February key assessment exam

Parent/Carer Signature  
.....